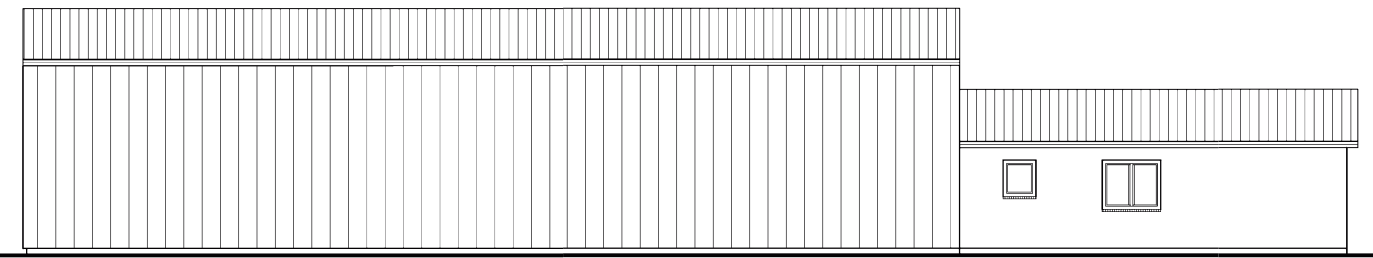
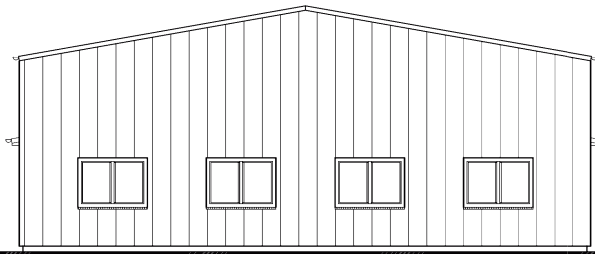


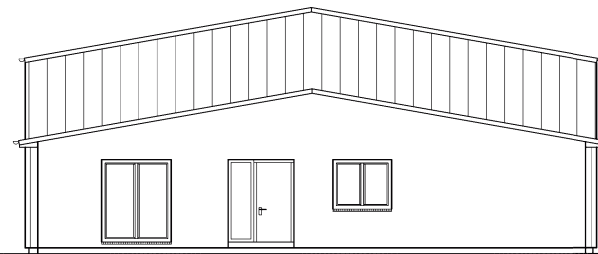
Betriebsgebäude Süden



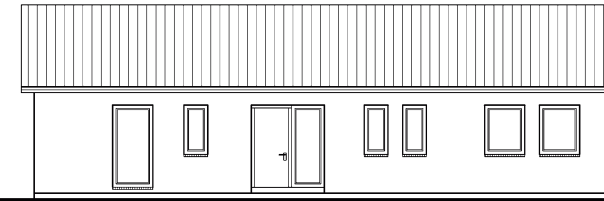
Betriebsgebäude Norden



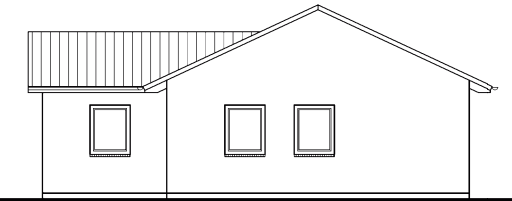
Betriebsgebäude Osten



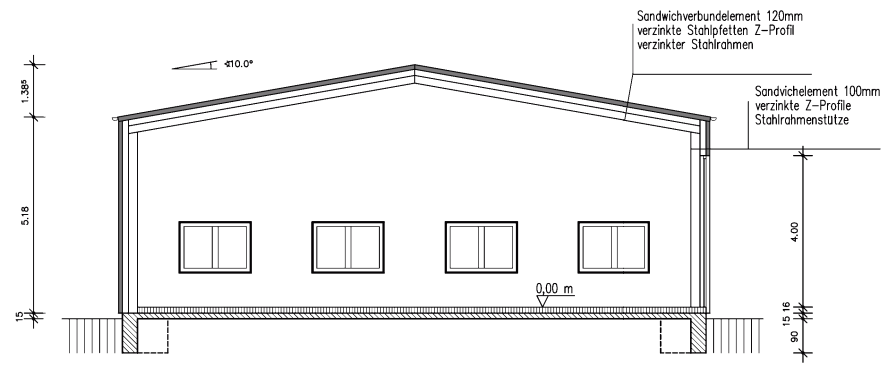
Betriebsgebäude Westen



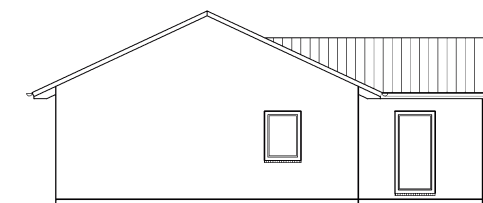
Betriebswohngebäude Osten



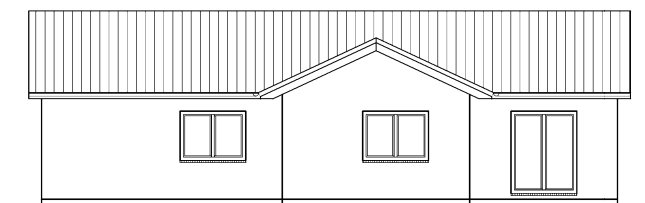
Betriebswohngebäude Süden



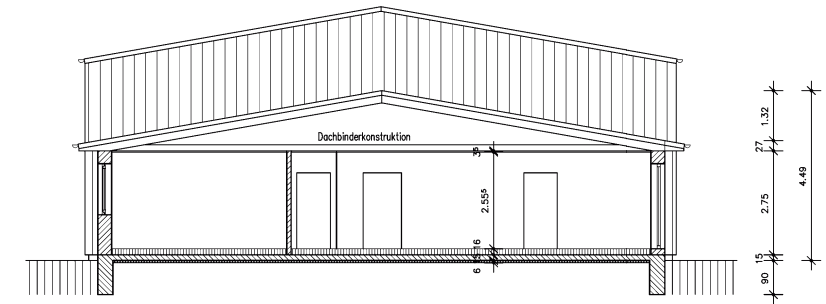
Schnitt A - A



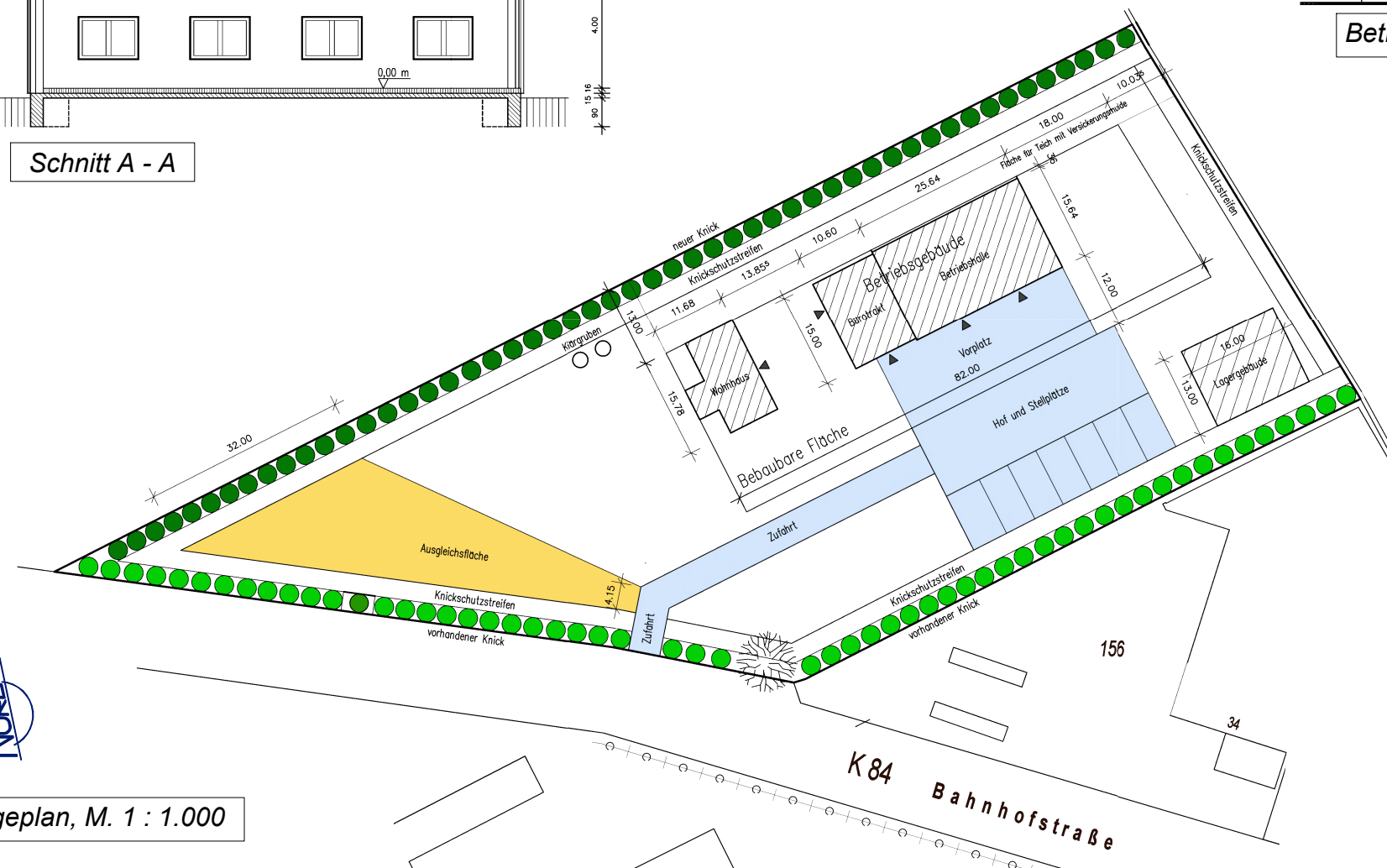
Betriebswohngebäude Norden



Betriebswohngebäude Westen



Schnitt B - B



Lageplan, M. 1 : 1.000